

# Canalside

**SECTOR:**

Groundworks

**OUR ROLE:**

Subcontractor

**LOCATION:**

Woking

**CLIENT:**

LIFE Build Solutions Ltd

**PROJECT VALUE:**

£5.5m

**DURATION:**

18 months

**OVERVIEW:**

As Subcontractor, Natta undertook the groundworks package for a new 88-unit residential housing development known as Canalside in Woking. Furthermore, the project formed part of the wider housing scheme for LIFE Build Solutions Ltd, and focused on delivering high-quality new homes.

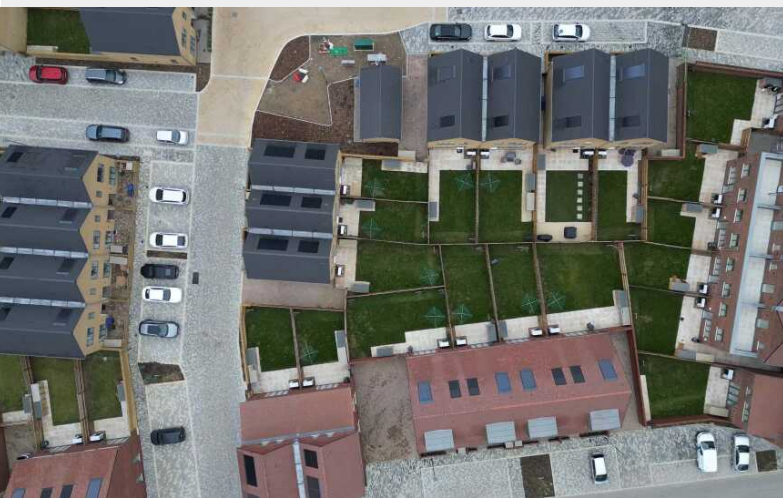
**SCOPE OF WORKS:**

The scope of Natta's involvement centred on the delivery of comprehensive groundworks to support the construction of the development, ensuring that the foundations and associated infrastructure were prepared to a high standard. Work on this site consisted of a mixture of traditional strip foundations and vibro piled foundations, carefully selected to suit varying ground conditions across the development. In addition, we constructed the internal roads and parking areas, with permeable and non-permeable surfacing designed by us. Therefore, supporting effective surface water management while also meeting the functionality and durability requirements.

However, a key challenge on the project was the presence of a very high water table, combined with a considerable number of large attenuation tanks. Therefore, these conditions required careful planning and coordination to manage the water using a combination of well pointing and sump pumping. As such, we carried these works out in distinct parcels as to not overburden the local water network.

Our client, LIFE Build Solutions Ltd, selected Natta for this project due to our proven experience and capability of managing these complex engineering methods. Overall, the successful delivery of the groundworks package further demonstrates Natta's expertise in supporting residential developments through high-quality, well coordinated civil engineering works.





“We were excited to have been awarded another project with Crest Nicholson, showcasing their trust in our ability to complete works to a high standard.”

**Matt Sainty**

COMMERCIAL DIRECTOR, NATTA

“