

Sittingbourne



SECTOR:

Senior Living, Care Home,
Design and Build

OUR ROLE:

Main Contractor

LOCATION:

Sittingbourne, Kent

CLIENT:

Graham Land &
Developments

PROJECT VALUE:

£16.5m

DURATION:

22 months

OVERVIEW:

Natta has been appointed to deliver the full design and build of a senior living care home in Sittingbourne. The project comprises a 99-bed facility constructed in a traditional build style for our client Graham Care. Consequently, the design prioritises comfort, accessibility and community. This reflects the client's approach to creating a homely environment for the older residents.

SCOPE OF WORKS:

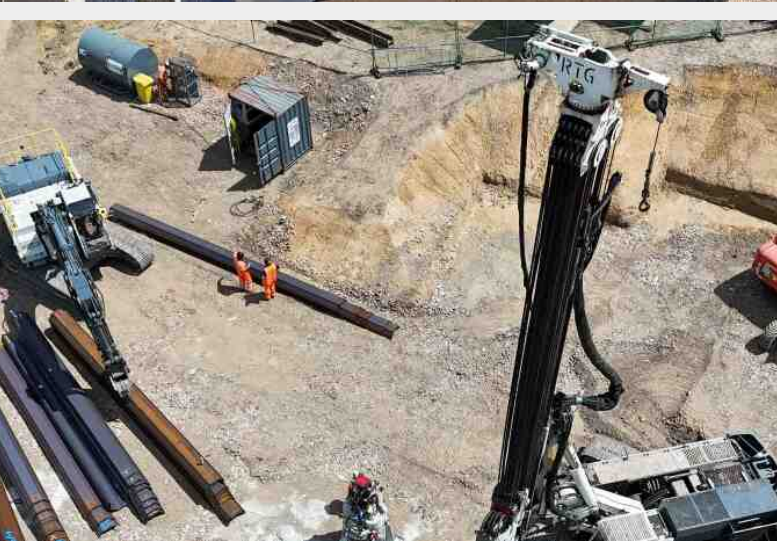
The scheme carefully addresses the challenges presented by the steeply sloping site through its design. To achieve this, the building's form follows the natural topography with the entry level at ground floor, and the lower ground floor positioned within the retained footprint to reduce visual impact.

Firstly, we are carrying out the external works. Works also include the construction of car parks, access roads, incoming services, drainage and infrastructure. Furthermore, the infrastructure works carefully coordinate with the sloping nature of the site, requiring detailed planning and execution to ensure durability and performance. Moreover, the design and build meet the latest standards in senior living provision.

The building has been designed with two three-storey wings extending from the main communal space, the central hub. In addition, the space will benefit from full-height glazing and roof lights over the double-height foyer. A passenger lift and service lift will also be provided to ensure that access for residents and goods is available to all levels of the building.

The senior living residence will provide a high standard of living and communal accommodation. In addition, we are utilising traditional materials, including brick, render, timber cladding and reconstructed stone detailing to enhance the existing style within the site and the surroundings.

Additionally, the quality of architectural design will also feature distinctive elevations and landscaped gardens, as well as a wide array of facilities and services that will support the high standard of accommodation. These elements will enable the care home to become a prime example of collective living for the elderly.



“We are looking forward to utilising our extensive civil engineering capabilities to overcome the challenges in the topography of this site. The project has a speedy delivery and the on site logistics will be crucial for a successful outcome.”

Matt Sainty

COMMERCIAL DIRECTOR, NATTA

“