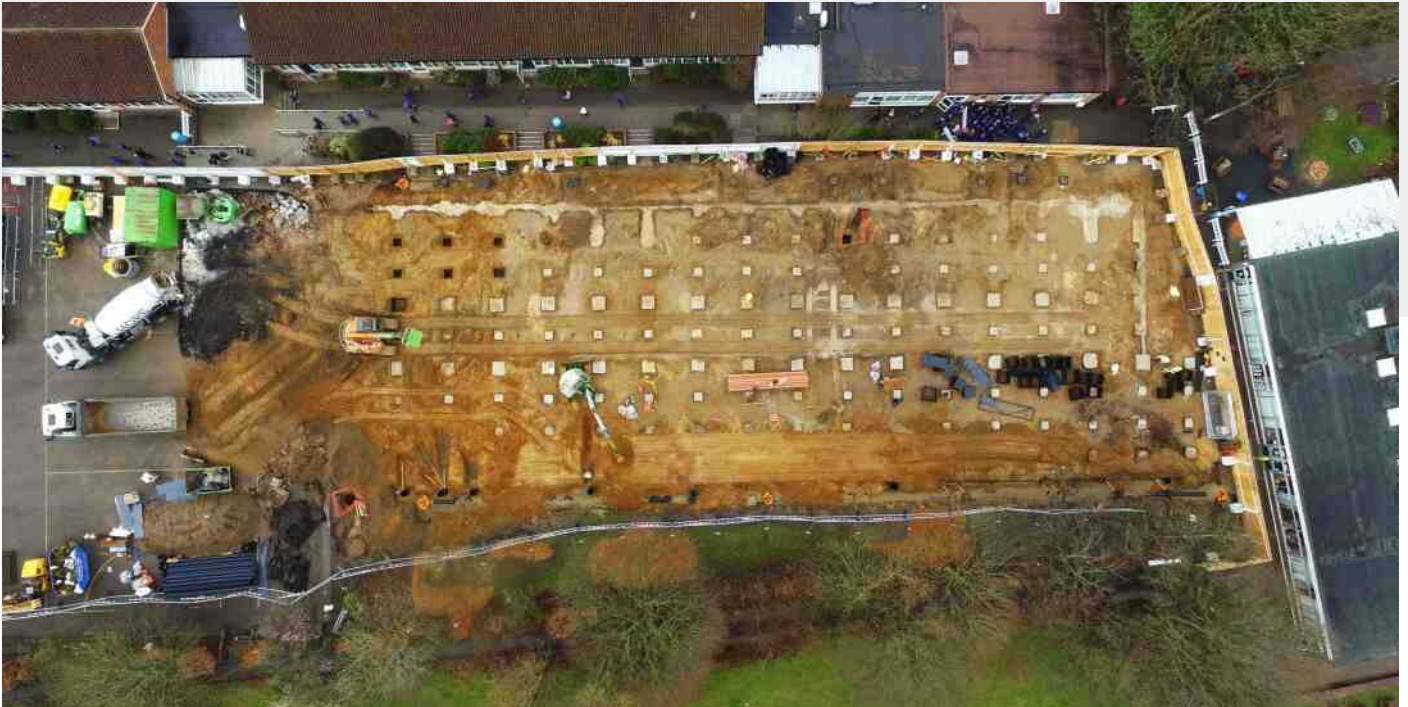


# Pyrford School



## SECTOR:

Civil Engineering,  
Groundworks

## OUR ROLE:

Sub Contractor

## LOCATION:

Pyrford, Surrey

## CLIENT:

Portakabin

## PROJECT VALUE:

£1m

## DURATION:

5 months

## OVERVIEW:

Here, Natta provided a full service to design, supply and install the onsite foundations, drainage, steel frame and cladding to an off-site manufactured school building.

## SCOPE OF WORKS:

Acting as lead contractor we managed the interface with the existing school and co-ordinated the build to be ready to receive the modular building.

Once the new school building opened the old school was demolished. We returned to site for a second visit and completed the external works.

See next page for more



