

Harpwood House—Wrotham



SECTOR:

Care Homes

OUR ROLE:

Main Contractor

LOCATION:

Wrotham

CLIENT:

Graham Land &
Developments

PROJECT VALUE:

£12.3m

DURATION:

2 years

OVERVIEW:

The project is the new build construction of a 104 bed care home for Graham Land & Developments Ltd.

SCOPE OF WORKS:

We are undertaking the full turnkey build of this project.

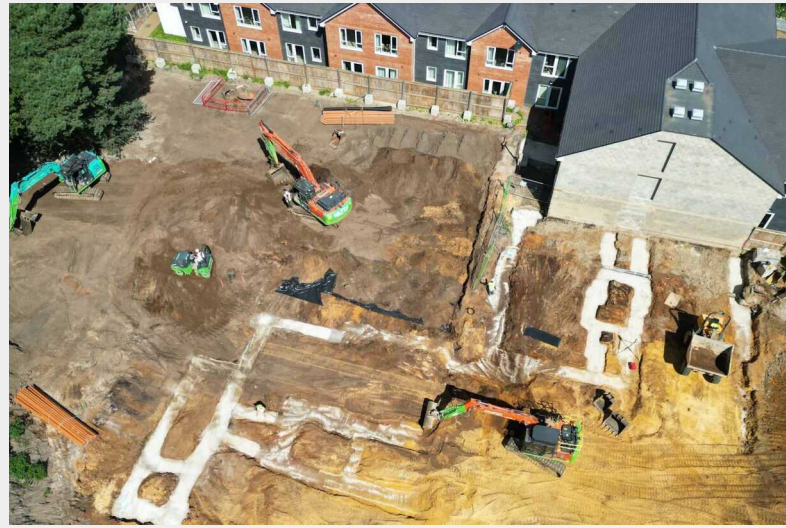
Particular challenges with this contract are ensuring that the existing care home can maintain it's full operation whilst we are developing the site.

Because of this, the project is split in to two distinct phases. The first phase is the new build construction of a 73 bed wing.

Practical Completion has been achieved on Phase 1. This will now be followed by Phase 2, the demolition of the existing home and subsequent reconstruction of a new wing to bring the completed home to full capacity.

See next page for more





"We are delighted to be involved in yet another Care Home project that will provide residents with a new living space as well as other necessary facilities."

Matt Sainty

COMMERCIAL DIRECTOR, NATTA

