

# Canalside



## SECTOR:

Groundworks

## OUR ROLE:

Sub Contractor

## LOCATION:

Woking

## CLIENT:

LIFE Build Solutions Ltd

## PROJECT VALUE:

£5.5m

## DURATION:

18 months

## OVERVIEW:

As Sub Contractor, Natta undertook the groundworks for a new 88 unit housing development called Canalside in Woking.

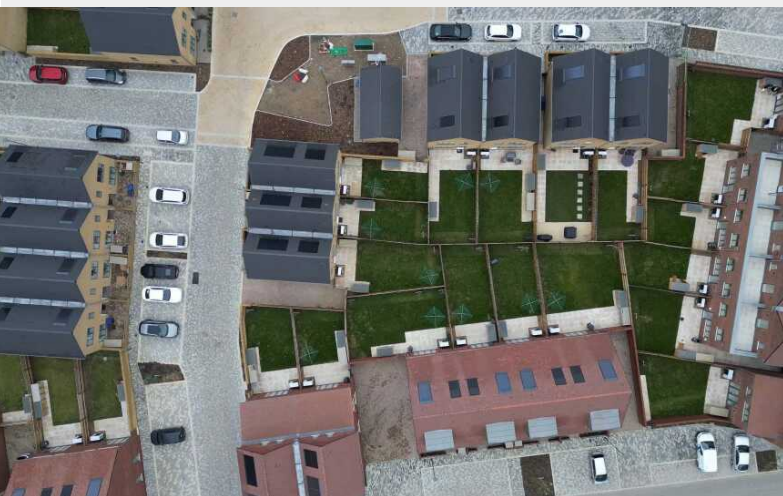
## SCOPE OF WORKS:

Work on this site consisted of a mixture of traditional strip foundations and vibro piled foundations. The construction of roads and parking areas varied between permeable and non-permeable.

There were a considerable number of large attenuation tanks on site as well as a very high water table. This required careful planning and coordination to manage the water using a combination of well pointing and sump pumping. As such, we carried these works out in distinct parcels as to not overburden the local water network.

Our client, LIFE Build Solutions Ltd selected Natta for this project because of our experience and capability of managing these complex engineering methods.





“We were excited to have been awarded another project with Crest Nicholson, showcasing their trust in our ability to complete works to a high standard.”

**Matt Sainty**

COMMERCIAL DIRECTOR, NATTA

