

Canalside



SECTOR:

Groundworks

OUR ROLE:

Sub Contractor

LOCATION:

Woking

CLIENT:

LIFE Build Solutions Ltd

PROJECT VALUE:

£5.5m

DURATION:

18 months

OVERVIEW:

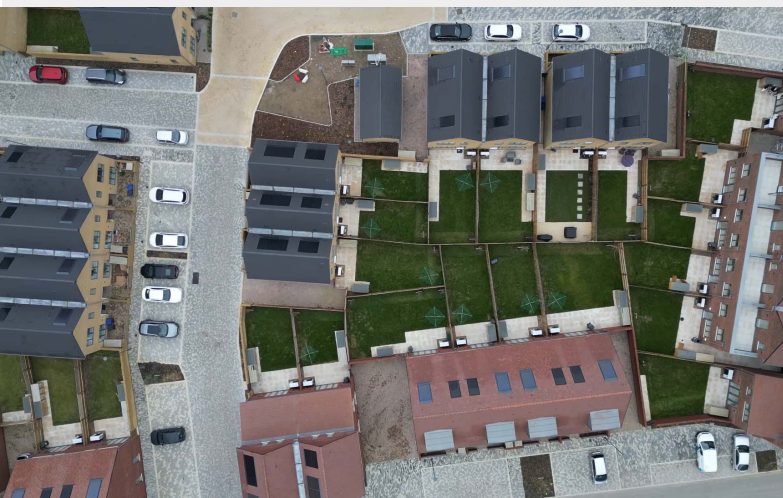
As Sub Contractor, Natta undertook the groundworks for a new 88 unit housing development called Canalside in Woking.

SCOPE OF WORKS:

Work on this site consisted of a mixture of traditional strip foundations and vibro piled foundations. The construction of roads and parking areas varied between permeable and non-permeable.

There were a considerable number of large attenuation tanks on site as well as a very high water table. This required careful planning and coordination to manage the water using a combination of well pointing and sump pumping. As such, we carried these works out in distinct parcels as to not overburden the local water network.

Our client, LIFE Build Solutions Ltd selected Natta for this project because of our experience and capability of managing these complex engineering methods.



“We were pleased to have been awarded this contract based on Natta’s track record and reputation of handling complex engineering projects.”

Matt Sainty
COMMERCIAL DIRECTOR, NATTA

