

Hertford



SECTOR:

Basements,
Groundworks

OUR ROLE:

Sub Contractor

LOCATION:

Hertford, Hertfordshire

CLIENT:

Weston Homes

PROJECT VALUE:

£3m

DURATION:

24 months

OVERVIEW:

The works consisted of a waterproof concrete basement with transfer slab. Together with associated 278 road works, storm water attenuation, external hard landscaping and underpinning.

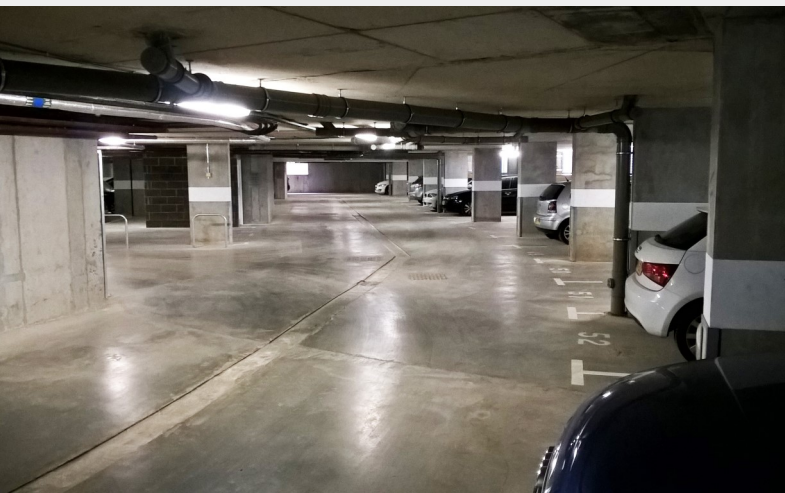
SCOPE OF WORKS:

The site had particular constraints working adjacent to the river Lea and retaining the existing highway which sat some 4 metres above river level.

The works were phased to quickly follow the demolition of the existing buildings and required close coordination with all of the stakeholders.

See next page for more





“Natta took on a difficult site and built it with minimum fuss to very high standard and to an accelerated programme.”

Kevin Matthews

PROJECT MANAGER, NATTA

